

MAKE

# THE RIGHT CONNECTION

**DELTA WAVE 6622-CC**  
Wave Soldering System



**Vitronics Soltec**  
Our reliability is your productivity

# MAKE THE RIGHT CONNECTION

## Why Vitronics Soltec?

Soldering is a key process in any assembly operation. The cost of inconsistent soldering yields, product returns or machine non-availability, often exceeds the total cost of the equipment. That's why you cannot make concessions when soldering quality is involved.

Vitronics Soltec's long-standing history of building sturdy wave soldering and reflow machines with stable processes and the commitment of support provide a good reason to include Vitronics Soltec into the vendor selection. With our large support offices around the globe including North America, Asia and Europe, we are committed to support our customers step by step, improve their soldering process and their product quality.

Thanks to our recurring customers we have learned to be at the edge of new technology demands.



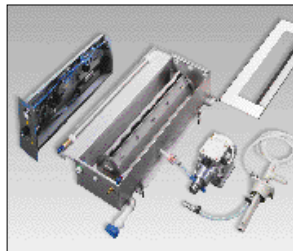
### WINDOWS 95™ SOFTWARE



Windows 95™ graphical user interface is the standard operating system and makes machine settings, control, and maintenance scheduling fast and easy. Standard software features include: Subsystem Alarming, PCB Recipe Functions, Board Tracking and SPC Logging.

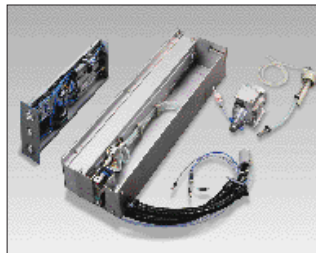
### FLUXING SYSTEMS

Fluxers can be changed in seconds. You may choose from any of Vitronics Soltec's proven Foam, Drum or Spray Nozzle Systems. In addition, the temperature compensated electronic flux specific gravity (SG) measurement insures repeatable and precise flux chemistries.

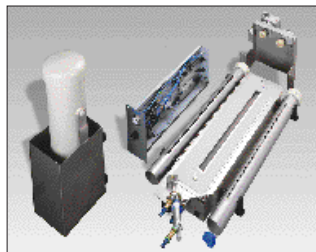


Electronic Flux Density Measurement

Foam Fluxer



Nozzle Spray Fluxer



Drum Spray Fluxer



### FLEXIBLE PREHEAT CONFIGURATION



When production requirements change, a different heater bank can be field retrofitted in seconds. The available preheater length is 1.8 meter (6 feet). The preheater can be configured with any combination of Forced Convection, Medium Wave IR, or Long Wave IR Calrod emitters. Each heating unit is PID controlled and has heat guiding plates to maintain even heat distribution from edge to edge. The total preheat length is enclosed with top side covers and focused exhaust.

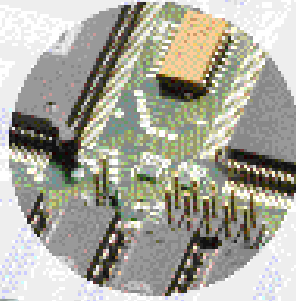
# DELTA WAVE 6622-CC

The Delta Wave Soldering system is designed for three-shift, high volume production with maximum uptime. Consistent High Yields are assured because the Delta is configured with such features as; Digital Motor Control, Complete Maintenance Accessibility and a robust overall design.

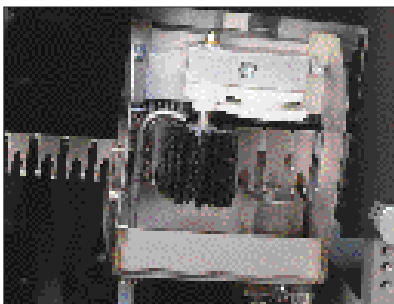
Precise and repeatable soldering results are provided by digital motor controls which maintain variation to within 1 rpm. Closed loop controls maintain precise solder and preheat temperatures.

Additionally, constant computer monitoring of wave height, flux density, and board temperature insure quality results.

The Delta Wave Soldering system is designed with a complete array of options and can be customized to fit any soldering application or chemistry. Critical subsystems such as fluxer, preheat, or wave are easily interchangeable.

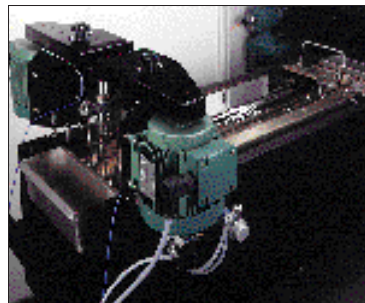


## FINGER TRANSPORT SYSTEM



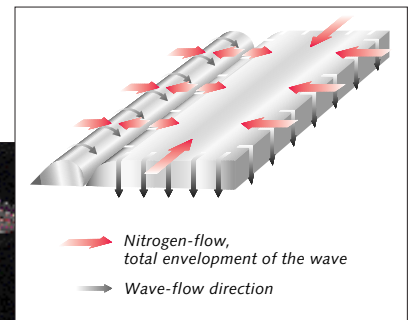
Easily removable spring loaded titanium fingers are provided as standard. A variety of fingers are available to handle special PCB's or pallets. A rotating liquid brush finger cleaner is also provided as standard.

## FLEXIBLE SOLDER WAVE



The Solder Wave can be easily converted into Double Wave, Smart Wave, or Combi Wave. Dross is automatically separated from the wave area and contained in an easily accessible separate dross compartment. This allows a simple dross removal process without interrupting production.

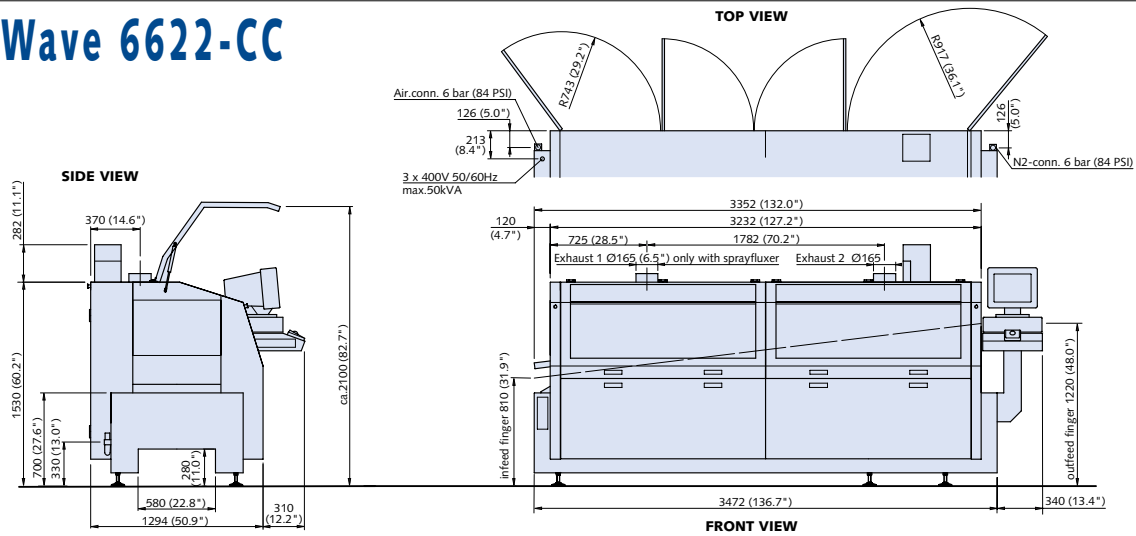
## NITROWAVE



The NitroWave creates a hood free inert environment over the wave(s). Wetting is improved and dross dramatically reduced.



# Delta Wave 6622-CC



## Options

- Various infeed and outfeed conveyors
- Foam, Nozzle or Drum Spray Fluxer
- Electronic SG measurement
- Liquid Finger Cleaning Recirculation System
- Motorized conveyor width adjustment
- L-shaped fingers
- Top side heating IR lamps
- Pyrometer for board temperature
- IR lamps, Calrod or Forced Convection preheat
- Smart, Double or Combi Wave
- NitroWave
- Automatic solder addition
- PCB wire support system
- Barcode reader (with Vitronics Soltec infeed conveyor only)
- Pincode reader (with Vitronics Soltec infeed conveyor only)
- Windows™ SPC software

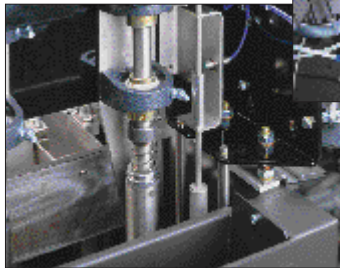
## Vitronics Soltec Training Program

Vitronics Soltec's technical centres in Singapore, the Netherlands and the United States offer various levels of customer training courses on soldering processes, equipment operation and maintenance. Vitronics Soltec also provides customers in house training courses or hands-on process support to enhance both the knowledge and the soldering yields.

## Easy Accessibility



EASY FINGER REMOVAL



INTERNAL CHIP NOZZLE CLEANING



LOW LEVEL SOLDERPOT ROLL-OUT



SLIDE-OUT HEATING MODULES WITH DRIP TRAYS

# Vitronics Soltec

Our reliability is your productivity

### Europe

#### VITRONICS SOLTEC BV

Karolusstraat 20  
4903 RJ Oosterhout  
the Netherlands  
tel. +31-162-483000  
fax +31-162-483253

### Germany

#### VITRONICS SOLTEC GmbH

An der Köhlerei 7  
97828 Marktheidenfeld  
Germany  
tel. +49-9391-98820  
fax +49-9391-988228

### Americas

#### VITRONICS SOLTEC Inc.

2 Marin Way  
Stratham, NH 03885  
U.S.A.  
tel. +1-603-772-7778  
fax +1-603-772-7776

### Asia Pacific

#### VITRONICS SOLTEC PTE LTD.

10 Ang Mo Kio St 65  
Techpoint Unit 01-05  
Singapore 569059  
tel. +65-484-3010  
fax +65-484-1910

A **DOVER** TECHNOLOGIES COMPANY



All Vitronics Soltec equipment is designed to meet the European CE directives